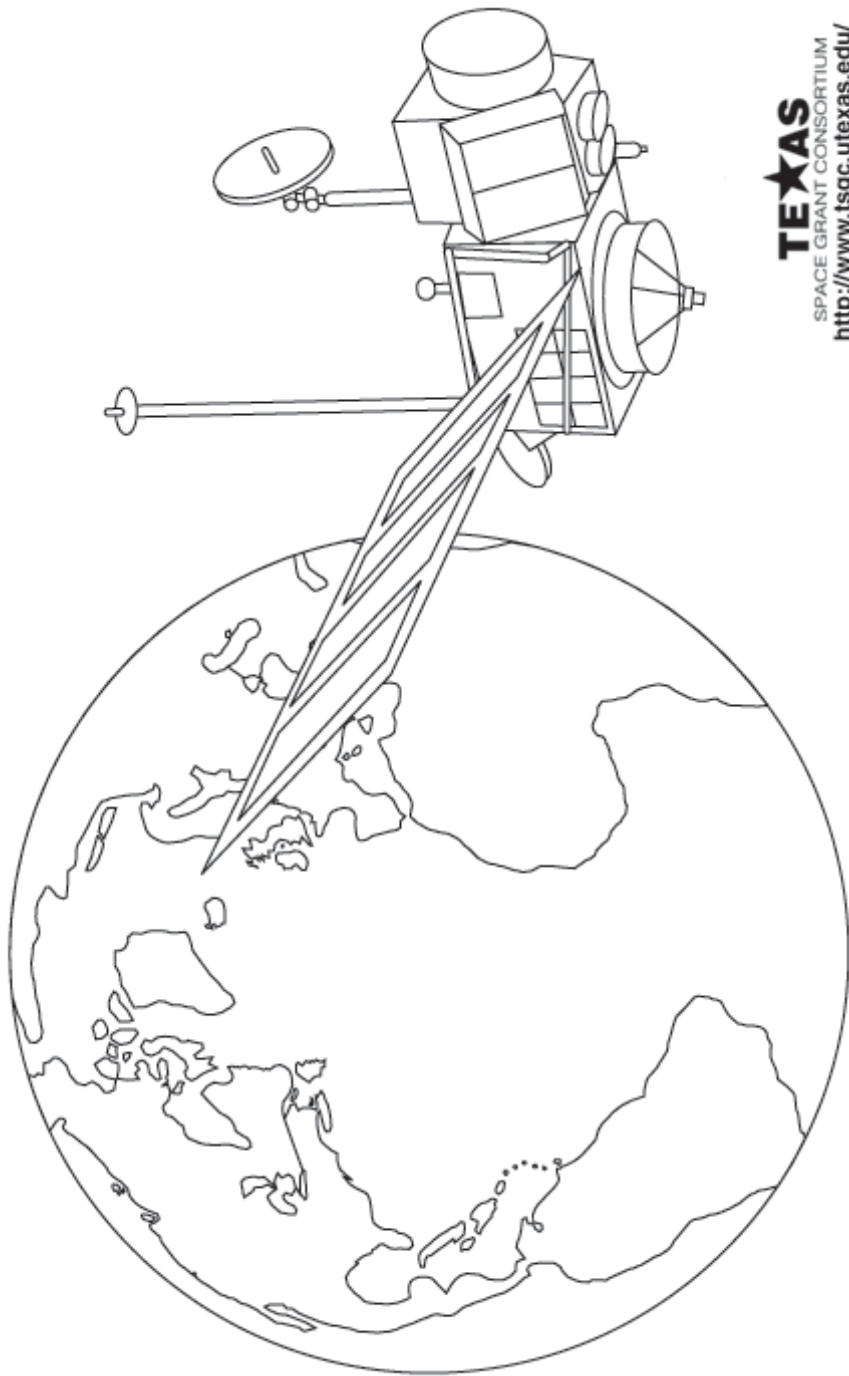


Module 1, Investigation 2: Log 1

Why do we need satellites?

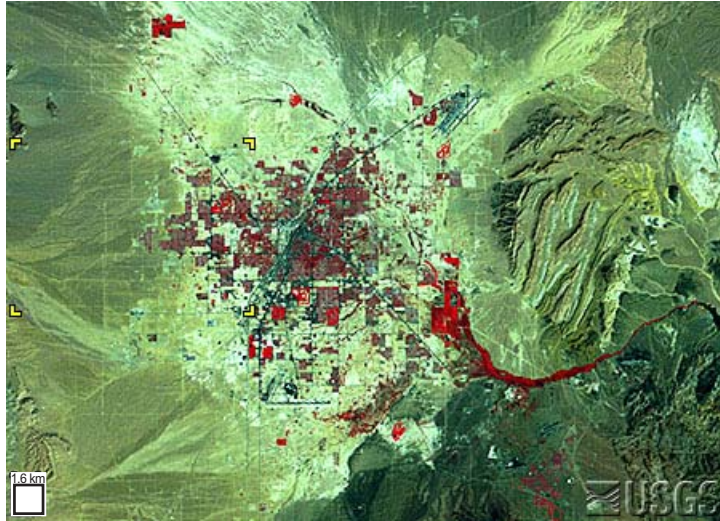


TEXAS
SPACE GRANT CONSORTIUM
<http://www.tsgc.utexas.edu/>



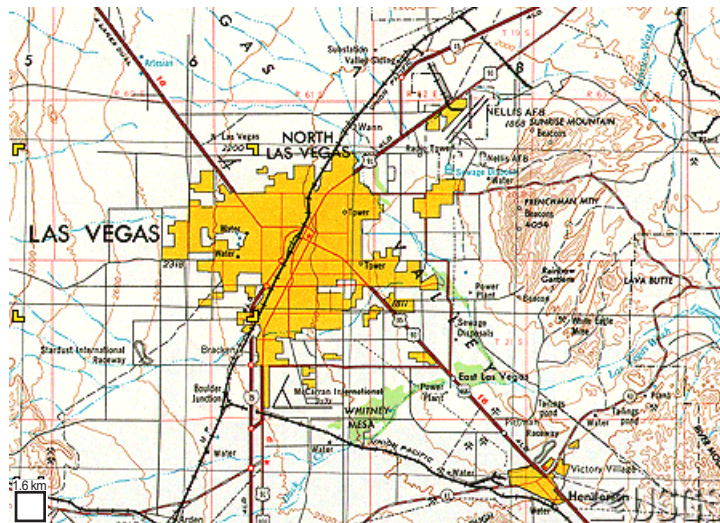
Module 1, Investigation 2: Log 2

It's a map! or It's an image—Boxes



Can show borders of countries

Can show actual water bodies



Can show actual landforms

Can show quick changes to the land

Can show drawings of land and water



Module 1, Investigation 2: Log 3

It's a map! or It's an image!—Poster

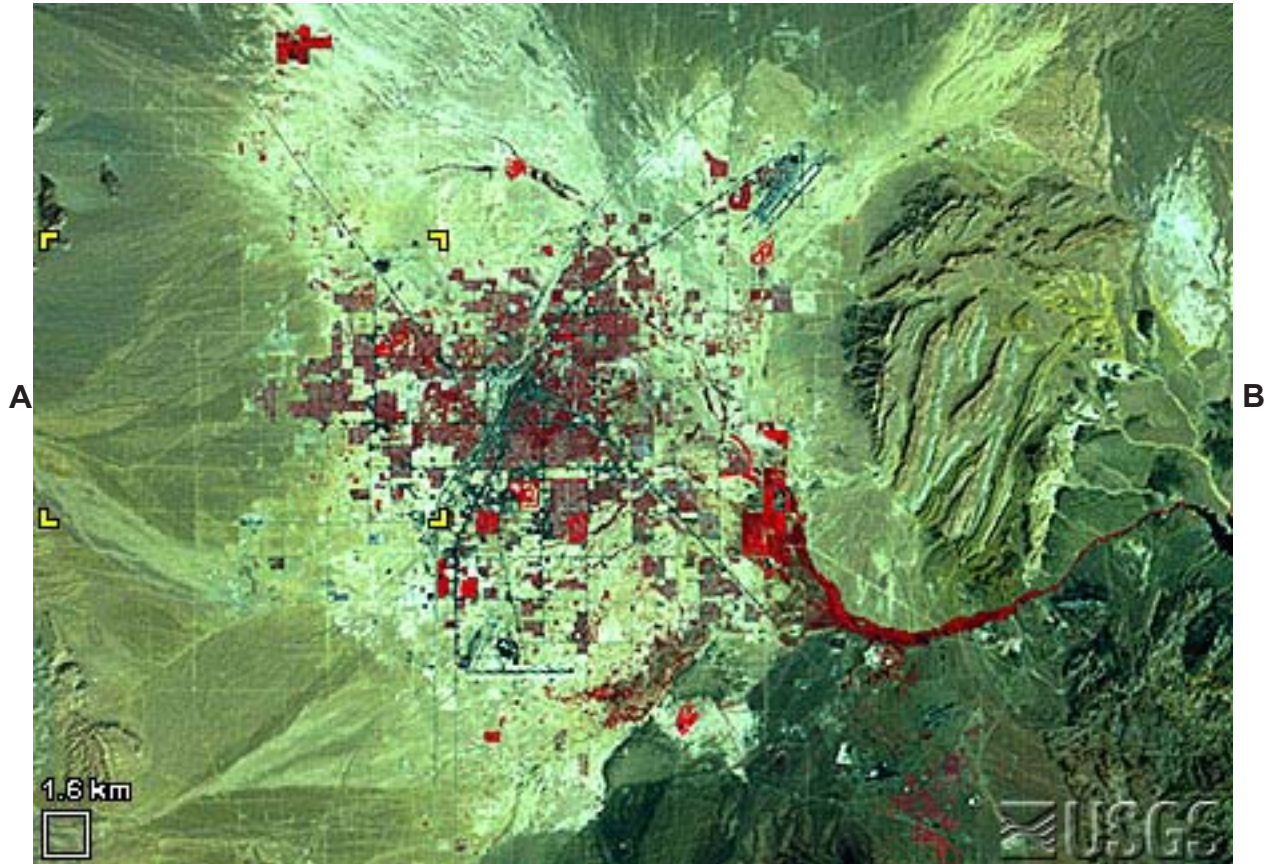
It's a Map!

It's an Image from Space!



Module 1, Investigation 2: Log 4

What do you see in this image?



Las Vegas, 1972

Source: <http://edc.usgs.gov/earthshots/slow/LasVegasa/LasVegas>

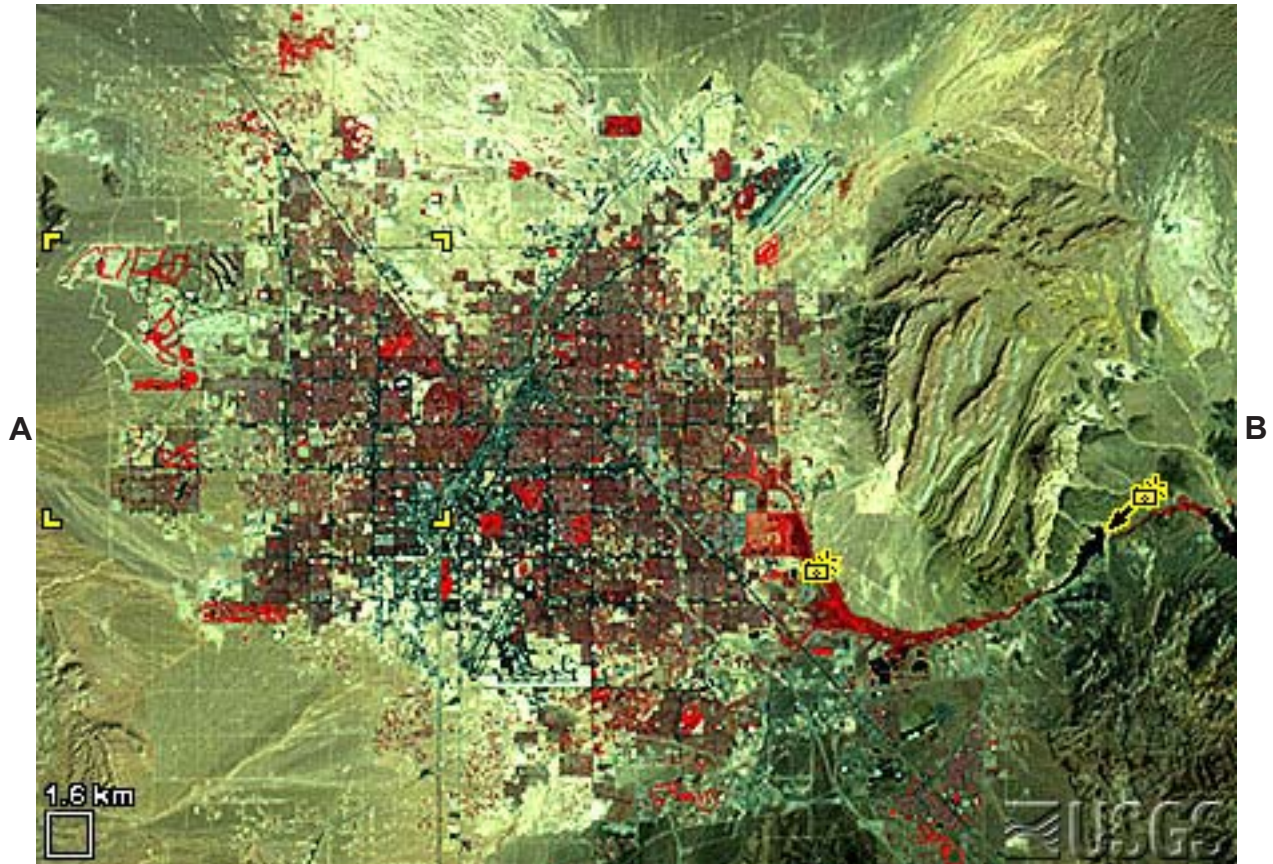
1. Draw a line around the city with a fine black marker.
2. Place a ruler between points A and B. Use the scale to figure out the distance across the city from the easternmost edge to the westernmost edge.

_____ kilometers



Module 1, Investigation 2: Log 5

How has this place changed? How do you know?



Las Vegas, 1992

Source: <http://edc.usgs.gov/earthshots/slow/LasVegas/LasVegas>

1. Draw a line around the city with a fine black marker.
2. Place a ruler between A and B. Use the scale to figure out the distance from the easternmost edge of the city to the westernmost edge.

_____ kilometers
3. How much did Las Vegas expand along this east-west line between 1972 and 1992?

_____ kilometers
4. Make this image into a map! You have already drawn a line around the city. Now use the marker to outline the highways going into Las Vegas and the streets in the city.